

# HANGING GUIDE

How to apply the Peel & Stick wallpaper in 6 easy steps.

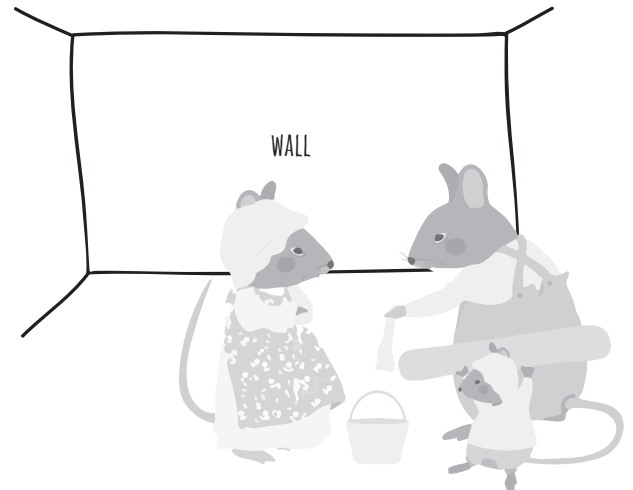
We always recommend a professional to apply the wallpaper.

## WHAT YOU NEED:

- Measure tape
- Pencil
- Stanley/craft knife
- Spirit level
- Soft brush
- Plastic smoother
- Seam roler
- Straight edge ruler

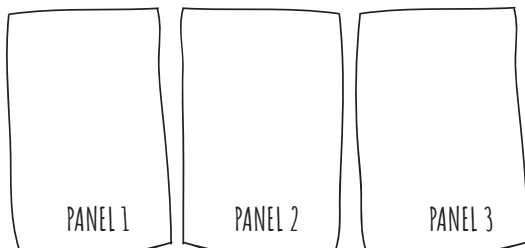
## 1. PREPARE WALL SURFACE

Brush off area to be covered to remove all dirt and loose material. Any holes, cracks or defects in the surface should be filled with a good quality filler, smoothed out and allowed to dry.



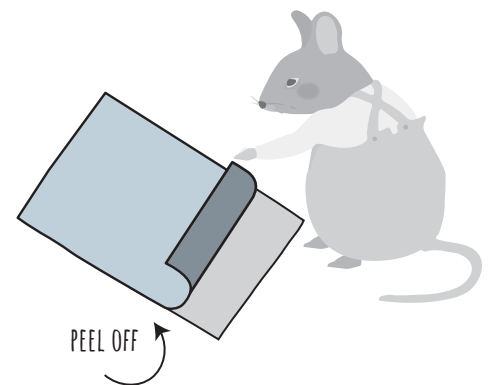
## 2. LAYOUT YOUR MURAL

Unroll the wallpaper and separate the panels. Measure the width of the rolls and mark the width of the roll on the wall. Lay out panel on the floor, and arrange in hanging order on the floor. Mark the overlap with a pencil.



## 3. PREPARE THE PANEL (PEEL)

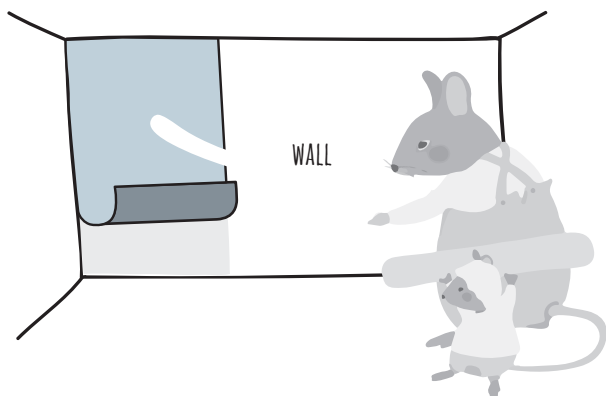
Turn over the first panel and peel about 30cm (12in.) of the backing away from the paper.



## 4. HANG THE FIRST PANEL

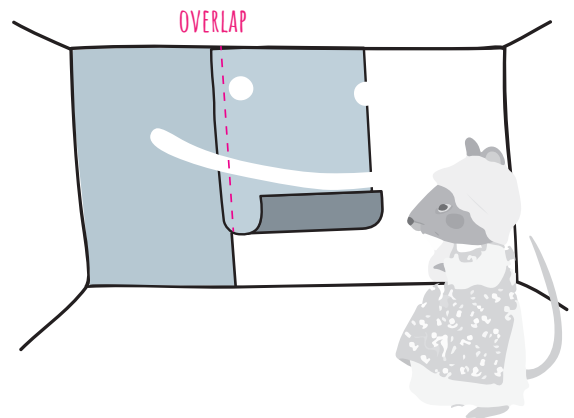
Apply the paper to the top of the wall. Align the side of the strip to your mark and lightly press the edge to the wall along the mark. You can reposition if needed to ensure a vertical seam.

**Important:** Be careful not to pull or stretch the material or the pattern will not align. Working from top to bottom, pull the backing away as you evenly press the paper to the wall. Do not force, let gravity assist you. Using a plastic smoother, work your way down the panel in a back and forth motion, smoothing the material to the wall and pushing out any air bubbles.



## 5. OVERLAP THE WALLPAPER

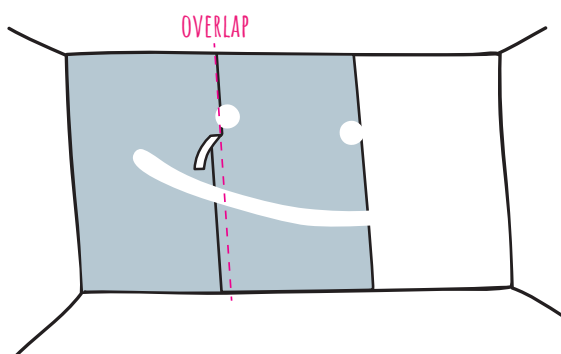
Now you can repeat steps 3 and 4 for the second panel. Remember the panels are printed in order to overlap 2,5cm (0,98in)! Repeat procedure visually matching the image and adjust the position until the pattern completely matches.



## 6. REMOVE THE EXCESS OVERLAP

THIS STEP IS OPTIONAL!  
YOU CAN CHOOSE TO  
LEAVE THE OVERLAP.

If you want to remove the overlap, cut away any excess paper using a knife (sharp blade) or cutter and a straight edge. Make sure the product is well bonded at the join.



## 7. REPEAT UNTIL FINISHED

Repeat steps and once all is done, trim off excess material at ceiling and baseboard with a straight edge and sharp razor knife.

Now sit back and enjoy your wallpaper and handiwork :)

